

LAKEVIEW

PALESTINE, TEXAS



SUMMER CAMP

PARENT GUIDE
2023

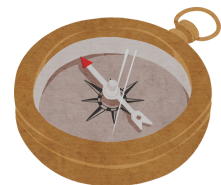




TABLE OF CONTENTS

INTRODUCTION	2
CONTACT INFORMATION	3
PACKING LIST	4
OBJECTIVES	6
BUNK REQUESTS	7
LAKEVIEW BUCKS	7
POLICIES	8
BEHAVIOR GUIDELINES	8
MEDICATIONS	8
OPENING DAY AND CLOSING DAY PROCEDURES	9
PHOTOS W/ BUNK 1	10
REGISTRATION DETAILS	11
FREQUENTLY ASKED QUESTIONS	12

WELCOME

WE ARE SO THANKFUL THAT YOU HAVE CHOSEN TO SEND YOUR CAMPER TO BE A PART OF OUR LAKEVIEW FAMILY.

WE ARE THANKFUL FOR THE OPPORTUNITY TO BE A POSITIVE INFLUENCE FOR ALL WHO CROSS OUR BRIDGE. WE TRUST AND BELIEVE THAT IN YOUR CAMPER'S TIME HERE, WE WILL WORK TO INSTILL IN THEM A FOUNDATION IN CHRIST SO THAT THEY MAY BE A LIGHT THAT SHINES TO OTHERS.

THIS BOOKLET HAS BEEN CAREFULLY CRAFTED SO YOU MAY PREPARE YOUR CAMPER FOR AN OPTIMAL EXPERIENCE IN THEIR TIME AT SUMMER CAMP. PLEASE READ THIS CAREFULLY AND GIVE YOUR CAMPER OWNERSHIP IN THE EXPECTATIONS THEY HAVE FOR THEIR TIME AT CAMP. AGAIN, WE THANK YOU FOR YOUR BELIEF IN LAKEVIEW AND WHAT GOD HAS IN STORE FOR OUR PROGRAM AND FUTURE.

GOD BLESS,

DREW WALKER
DIRECTOR OF MINISTRY & PROGRAMS





LAKEVIEW CONTACT INFORMATION

CAMP OFFICE	903-538-2711
CAMP FAX	903-538-2797
CAMP REGISTRAR EMAIL	REGISTRAR@LAKEVIEWMCC.ORG
CAMP ADDRESS	400 PRIVATE ROAD 6036 PALESTINE, TX 75801
CAMP OFFICE HOURS	MON-FRI 8:00 AM - 4:30 PM

EMERGENCY CONTACT INFORMATION

DREW WALKER	405-830-4904
CAMERON JONES	903-724-8851
JOSH PULVER	405-747-5477
MONROE WALKER	903-724-5553

PACKING LIST

TO KEEP OUR CABIN AREA CLEAR FOR WALKING SPACE, WE ASK THAT EACH ATTENDEE LIMIT THEIR PACKING TO ONE TRUNK/SUITCASE AND A BACKPACK. THANK YOU FOR BEING CONSIDERATE OF OUR CABIN SPACE IN YOUR PACKING!

REMEMBER TO LABEL ALL PERSONAL ITEMS!

PLEASE PACK ALL MEDICATIONS SEPARATELY FROM YOUR CAMPER'S OTHER BELONGINGS. ALL MEDICATIONS (INCLUDING OTC MEDS AND VITAMINS/SUPPLEMENTS) WILL BE TURNED IN TO THE INFIRMARY/CAMP NURSE UPON ARRIVAL AT REGISTRATION. THESE MEDICATIONS MUST BE IN THEIR ORIGINAL BOTTLES/PACKAGING AND PRESCRIBED TO EACH SPECIFIC CAMPER TO BE RECORDED AND SUBMITTED. CAMPERS CAN NOT SELF MEDICATE.

CLOTHING: ALL CLOTHING SHOULD BE CLEARLY LABELED.

- ☐ 8 T-SHIRTS
- ☐ 6 PAIRS OF SHORTS
- ☐ 8 SETS OF SOCKS AND UNDERWEAR
- ☐ 2 PAIRS OF STURDY TENNIS SHOES TO BE WORN AT ALL TIMES, WITH EXCEPTION TO WATER ACTIVITIES
- ☐ 1 PAIR OF SANDALS WITH HEEL STRAP/WATER SHOES/OLD TENNIS SHOES
- ☐ LIGHT JACKET OR SWEATSHIRT
- ☐ 2 SETS OF PAJAMAS
- ☐ RAIN JACKET
- ☐ 3 SWIMSUITS (MODEST ONE-PIECE OR TWO-PIECE WITH NO TIES FOR GIRLS, MODEST TRUNKS FOR BOYS)
- ☐ 1 SWIM SHIRT FOR SUN COVERAGE (OPTIONAL)
- ☐ 1 PAIR OF PANTS
- ☐ HAT/BALL CAP WITH BRIM

MESSY GAMES ATTIRE: ALL CLOTHING SHOULD BE CLEARLY LABELED.

- ☐ 1 SHIRT AND SHORTS (THAT MIGHT GET TOO MESSY TO RETURN HOME)

TOILETRIES: ALL TOILETRY ITEMS SHOULD BE CLEARLY LABELED.

PLEASE PACK A SHOWER CADDIE/TOILETRY BAG FOR YOUR CAMPER TO CARRY THEIR BELONGINGS IN BETWEEN THEIR BUNK AND BATHROOM.

- ☐ BODY WASH
- ☐ SHAMPOO & CONDITIONER
- ☐ TOOTHBRUSH & TOOTHPASTE
- ☐ BRUSH/COMB
- ☐ BATH TOWEL, WASH CLOTH, HAND TOWEL
- ☐ NON-AEROSOL DEODORANT
- ☐ SHOWER SHOES (FLIP FLOPS)

LINENS: ALL LINENS SHOULD BE CLEARLY LABELED.

WE HIGHLY RECOMMEND TRYING TO MAKE YOUR CAMPER'S BED FEEL AT HOME WITH THEIR OWN SHEETS, COMFORTERS, PILLOWS AND STUFFED ANIMALS!

- ☐ 2 TWIN SHEET SETS/SLEEPING BAG
- ☐ BLANKET
- ☐ PILLOW
- ☐ 2 PILLOWCASES
- ☐ BEACH TOWEL
- ☐ LAUNDRY BAG

MISCELLANEOUS SUPPLIES: ALL MISCELLANEOUS SUPPLIES SHOULD BE CLEARLY LABELED.

- ☐ BIBLE (ALL CAMPERS ARE ENCOURAGED TO HAVE THEIR OWN BIBLE)
- ☐ JOURNAL
- ☐ BACKPACK
- ☐ 2 STURDY WATER BOTTLES (CLEARLY LABELED W/ CAMPER'S NAME)
- ☐ SUNGLASSES
- ☐ BOOKS/COLORING BOOKS
- ☐ PAPER/STATIONERY/POSTCARDS (PLEASE PROVIDE STAMPS OR PRE-STAMP YOUR CHILD'S STATIONERY.)
- ☐ PENS/MARKERS FOR WRITING/COLORING
- ☐ INSECT REPELLENT
- ☐ SUNSCREEN
- ☐ FLASHLIGHT WITH NEW BATTERIES
- ☐ FAVORITE STUFFED ANIMAL
- ☐ FUN STUFF (NEON CLOTHES FOR SILENT DISCO, SILLY COSTUMES, ETC.)

DO NOT BRING:

DO NOT BRING ANY OF THE FOLLOWING ITEMS TO CAMP OR THEY WILL BE CONFISCATED: CELL PHONE, TABLET, IPAD, TELEVISION, ELECTRONIC GAMES, SILLY STRING, HOVER BOARDS, CAMERAS, PRANK ITEMS, DIFFUSERS, OPEN FLAMES SUCH AS CANDLES OR INCENSE, IPOD, JEWELRY, ILLEGAL DRUGS, ALCOHOL, TOBACCO, FIREWORKS, FIREARMS, KNIVES (INCLUDING POCKET KNIVES), SNACK FOODS, CANDY, DRINKS. ALL PERSONAL ITEMS BROUGHT TO CAMP BY CAMPERS, STAFF OR PARENTS ARE THE RESPONSIBILITY OF THE OWNER. LAKEVIEW WILL NOT BE RESPONSIBLE FOR DAMAGED OR LOST ITEMS. LAKEVIEW WILL ATTEMPT TO LOCATE ITEMS LEFT BEHIND BUT CANNOT GUARANTEE RETRIEVAL OR REPLACEMENT OF LOST PERSONAL BELONGINGS.

MISSION STATEMENT

TRANSFORMING LIVES BY EXPERIENCING GOD'S LOVE IN A SAFE ENVIRONMENT THROUGH MEANINGFUL RELATIONSHIPS AND GRACIOUS HOSPITALITY.

LAKEVIEW SUMMER CAMP PROVIDES AN OPPORTUNITY FOR CHILDREN TO EXPERIENCE THE CHRISTIAN LIFE THROUGH EXCITING AND ADVENTUROUS ACTIVITIES, GUIDED STUDY OF CHRIST'S TEACHINGS AND POSITIVE COMMUNITY LIVING EXPERIENCES. ESTABLISHED IN 1947, THIS CO-ED, RESIDENTIAL CAMP IS LOCATED IN EAST TEXAS IN ONE OF THE PINEYWOODS' MOST BEAUTIFUL CONFERENCE CENTERS. LAKEVIEW SUMMER CAMP PROVIDES A PLACE WHERE CAMPERS CAN FEEL SAFE AND COMFORTABLE WITH THEIR PEERS WHILE DISCOVERING, CHALLENGING, AND GROWING IN THEIR CHRISTIAN FAITH. THE LOVE OF CHRIST IS NOT ONLY HEARD AND READ BUT ALSO EXPERIENCED THROUGHOUT OUR ACTIVITIES. WE DEMONSTRATE THE HEART OF THE GOSPEL THROUGH DEVELOPING INDEPENDENCE AND SELF-CONFIDENCE, BUILDING STRONG RELATIONSHIPS, AND EXPERIENCING NEW ACTIVITIES. LAKEVIEW SUMMER CAMP IS A PLACE FOR CAMPERS TO HAVE FUN, MAKE NEW FRIENDS, CHALLENGE THEMSELVES, AND ESTABLISH A FOUNDATION IN THEIR FAITH.

OBJECTIVES

- 🌲 TO STRENGTHEN EACH CAMPER'S CHRISTIAN FAITH AND HELP THEM DISCOVER THAT THEY ARE A UNIQUE PERSON WHOM GOD LOVES.
- 🌲 TO PROMOTE GROWTH IN GROUP COOPERATION, SELF-CONFIDENCE, AND SELF-WORTH THROUGH CHALLENGING ACTIVITIES IN A SUPPORTIVE ENVIRONMENT.
- 🌲 TO PROMOTE A SENSE OF COMMUNITY INVOLVEMENT, BELONGING AND RESPONSIBILITY THROUGH DAILY LIVING IN A CAMP SETTING.
- 🌲 TO PROVIDE POSITIVE ADULT ROLE MODELING THROUGH CAMPER'S INTERACTIONS WITH COUNSELORS.
- 🌲 TO DEVELOP ENVIRONMENTAL AWARENESS THROUGH LEARNING AND LIVING IN THE NATURAL ENVIRONMENT.
- 🌲 TO EXPOSE CAMPERS TO OUTDOOR SKILLS AND ACTIVITIES AND PROVIDE A SOLID BASE FOR CAMPERS TO BUILD ON THESE SKILLS THROUGHOUT THEIR LIVES, WHILE RESPECTING NATURE AND ALL GOD HAS PROVIDED.
- 🌲 TO TEACH CAMPERS SAFETY IN OUTDOOR ACTIVITIES AND SPORTS.
- 🌲 TO PROMOTE AND INSTILL IMPORTANT LIFE SKILLS THROUGH OUR INTENTIONAL PROGRAMMING AT LAKEVIEW.

OBJECTIVE OUTCOMES

- 🌲 EXPRESS THEIR FAITH AND RELATIONSHIP WITH GOD.
- 🌲 USE VALUES SUCH AS EMPATHY, RESPONSIBILITY, RESPECT, TRUTHFULNESS, AND FAITH IN DEALINGS WITH OTHER CAMPERS AND STAFF.
- 🌲 TRY NEW OR DIFFICULT ACTIVITIES, TAKE INITIATIVE AND DEMONSTRATE SELF-DEPENDENCE IN ROUTINE SITUATIONS.
- 🌲 COOPERATE AND COMMUNICATE EFFECTIVELY WITH OTHER CAMPERS AND STAFF.
- 🌲 CARE FOR AND HELP EACH OTHER.
- 🌲 REACH OUT TO OTHERS, MAKE NEW FRIENDS, AND INCLUDE EVERYONE.
- 🌲 TAKE DAILY RESPONSIBILITY FOR CHORES INVOLVED WITH CAMP CARE AND ROUTINE.
- 🌲 RESPOND POSITIVELY IN BEHAVIOR AND ATTITUDE WHEN ASKED TO COMPLETE A TASK BY LAKEVIEW STAFF.
- 🌲 DEMONSTRATE RESPONSIBLE BEHAVIOR TOWARD THE ENVIRONMENT BY PICKING UP LITTER, CARING FOR THE ANIMALS, AND RESPECTING NATURAL LIFE.
- 🌲 DEVELOP NEW SKILLS AND DEMONSTRATE SAFETY IN OUTDOOR ACTIVITIES.



BUNK REQUESTS

WE WORK TO ACCOMMODATE BUNK REQUESTS BUT CANNOT GUARANTEE ALL REQUESTS. TO KEEP OUR GROUPS CONSISTENT WITH AGES, WITH NO GREATER THAN A ONE-YEAR AGE GAP, BUNK REQUESTS MUST BE SUBMITTED TWO WEEKS PRIOR TO THE ATTENDING SESSION.

*IF YOUR CAMPER DOES NOT GET ALL THEIR BUNK REQUESTS, WE ASK FOR YOUR SUPPORT IN THE OPPORTUNITIES TO MAKE NEW FRIENDS AT CAMP! BUNK/GROUP REQUESTS ARE NOT THE END-ALL/BE-ALL OF SUMMER CAMP. OUR HOPE IS TO GIVE EACH CAMPER AN OPPORTUNITY TO BUILD CONFIDENCE AND SELF-ESTEEM IN A CAMP SETTING. WE HAVE FOUND THAT WHEN PARENTS ARE SUPPORTIVE IN SETTING EXPECTATIONS FOR THEIR EXPERIENCE, CAMPERS ARE MORE WILLING AND OPEN TO NEW FRIENDSHIPS!

DUE TO THE DORM-STYLE SETUP FOR CAMPER LODGING AND BATHING, AS WELL AS THE WIDE-RANGE OF AGES IN EACH LIVING SPACE, ALL DORMITORY ASSIGNMENTS ARE BASED ON EACH CAMPER'S GENDER AT BIRTH.

LAKEVIEW BUCKS

DURING REGISTRATION, YOU WILL HAVE THE OPPORTUNITY TO DEPOSIT AT LEAST \$10 (WE RECOMMEND \$50) DIRECTLY INTO YOUR CAMPER'S STORE ACCOUNT TO USE AT THE GIFT SHOP, SNACK SHACK, AND WOHLA HUT. PLEASE PREPARE YOUR CHILD FOR THEIR VISITS TO THESE PLACES AND DISCUSS THE AMOUNT YOU WILL DEPOSIT INTO THEIR ACCOUNT. THE CAMP STORE HAS MERCHANDISE RANGING IN PRICE FROM \$1-\$60. ITEMS INCLUDE APPAREL, SOUVENIRS, STUFFED ANIMALS AND MORE. THE SNACK SHACK HAS CANDY, COOKIES, CHIPS, ICE CREAM, DRINKS AND MORE.

IF YOUR CAMPER FORGETS AN ESSENTIAL ITEM SUCH AS TOOTHPASTE OR OTHER TOILETRIES, THEY WILL BE AVAILABLE FOR PURCHASE IN THE STORE, ALONG WITH NUMEROUS SUMMER CAMP SHIRTS, SOUVENIRS AND KEEPSAKES.

*ANY FUNDS NOT USED FROM THE CAMPER'S STORE ACCOUNT BY THE END OF THE CAMP SESSION WILL BE DONATED TO THE CAMPER SCHOLARSHIP FUND.

CANCELLATION POLICY

ALL REGISTRATIONS REQUIRE A \$10 NON-REFUNDABLE REGISTRATION FEE. WE OFFER A FULL REFUND FOR ANY REASON IF WE ARE NOTIFIED OF A CANCELLATION MORE THAN 4 WEEKS PRIOR TO OPENING DAY OF THE SESSION. IF A CAMPER CANCELS BETWEEN 4 WEEKS AND 2 WEEKS PRIOR TO THE SESSION STARTING, A 50% REFUND OF THE TOTAL COST OF CAMP IS AVAILABLE. IF A CAMPER CANCELS WITHIN 2 WEEKS OF THE SESSION STARTING, NO REFUND WILL BE ISSUED.

LAKEVIEW WILL OFFER A FULL REFUND PRIOR TO A CAMPER CHECKING INTO CAMP IF THE CAMPER CAN NOT ATTEND FOR A MEDICAL REASON (DOCTOR'S NOTE REQUIRED) OR A DEATH IN THE FAMILY. IF A CAMPER IS REQUIRED TO LEAVE BECAUSE OF MEDICAL REASON OR DEATH DURING THE SESSION A 50% REFUND IS AVAILABLE. PLEASE CONNECT WITH THE LAKEVIEW SUMMER CAMP REGISTRAR WITH ANY QUESTIONS ABOUT OUR CANCELLATION POLICY FOR THE SUMMER OF 2023.

CAMPER BEHAVIOR

ALL CAMPERS WILL BE INSTRUCTED ON OUR BEHAVIOR AND SAFETY RULES ON THE FIRST DAY OF CAMP. ALL CAMPERS AND THEIR PARENT/GUARDIAN MUST REVIEW THE CAMPER CODE OF CONDUCT FORM PRIOR TO REGISTRATION. COUNSELORS ARE TRAINED TO HANDLE BEHAVIOR PROBLEMS WITH POSITIVE REINFORCEMENT, REDIRECTION, AND CONSEQUENCES APPROPRIATE TO THE CAMPER'S BEHAVIOR AND AGE LEVEL. CORPORAL PUNISHMENT IS NOT ALLOWED AT LAKEVIEW SUMMER CAMP. ALL INSTANCES REQUIRING DISCIPLINARY ACTION ARE RECORDED BY THE COUNSELOR AND SIGNED BY BOTH THE COUNSELOR AND THE CAMPER. PARENT PHONE CALLS WILL BE MADE DEPENDING ON THE SEVERITY OF A SITUATION OR REPEATED ACTS REQUIRING DISCIPLINARY ACTION. SHOULD A CAMPER EXHIBIT REPEATED EPISODES OF DISRUPTIVE, UNSAFE, OR VIOLENT BEHAVIOR THAT IS NOT CORRECTED WITH POSITIVE BEHAVIOR MANAGEMENT, HIS/HER PARENT OR GUARDIAN WILL BE ASKED TO PICK UP OR ARRANGE FOR THE CAMPER TO BE PICKED UP FROM LAKEVIEW IMMEDIATELY. NO REFUNDS WILL BE GIVEN UNDER THESE CIRCUMSTANCES. WE ENCOURAGE ALL CAMPERS TO TREAT EACH OTHER WITH RESPECT, REFRAINING FROM BULLYING OF ANY KIND. NEGATIVE INTERACTIONS, AS THEY ARE BROUGHT TO OUR ATTENTION, WILL BE ADDRESSED BY LAKEVIEW STAFF TO ENSURE ALL CAMPERS HAVE A POSITIVE AND UPLIFTING EXPERIENCE.

MEDICATIONS

IF YOUR CAMPER HAS A PRE-EXISTING CONDITION, ILLNESS, OR INJURY THAT HE/SHE SUSTAINED PRIOR TO COMING TO CAMP, FAMILIES WILL BE RESPONSIBLE FOR SUPPLYING LAKEVIEW SUMMER CAMP WITH ANY ON-GOING MEDICATIONS OR TREATMENTS THE CAMPER MAY BE RECEIVING. FAMILIES WILL BE RESPONSIBLE FOR ANY COSTS ASSOCIATED WITH ADDITIONAL MEDICATIONS OR TREATMENTS YOUR CAMPER MAY NEED FOR THEIR PRE-EXISTING CONDITION(S) WHILE AT CAMP. ALL MEDICATIONS INCLUDING OTC AND VITAMINS AND SUPPLEMENTS MUST BE IN THEIR ORIGINAL PACKAGING WITH ORIGINAL PRESCRIPTION LABEL. IF PRESCRIPTION DOSAGES OR TIMES HAVE CHANGED, THERE MUST BE A WRITTEN NOTE FROM THE PRESCRIBING PHYSICIAN AS TO THE CHANGE. OVER-THE-COUNTER MEDICATIONS AND VITAMINS AND SUPPLEMENTS MUST ALSO CONTAIN WRITTEN INSTRUCTIONS OF DOSAGES AND TIMES.

LIFE THREATENING ALLERGIES (BEE STINGS, FOOD ALLERGIES, ETC) NEED TO BE LISTED ON THE HEALTH FORM INCLUDED IN THE REGISTRATION PROCESS AND DISCUSSED WITH THE CAMP NURSE AND THE FOOD SERVICE DIRECTOR DURING THE CHECK-IN PROCESS. YOU ALSO MAY INFORM YOUR CHILD'S CAMP COUNSELORS ABOUT ANY SPECIAL NEEDS, BUT PLEASE DO NOT LIST IT ON YOUR CABIN LIFE FORM. IT MUST BE LISTED ON THE HEALTH FORM. EPI-PENS AND INHALERS MAY BE CARRIED BY YOUR CAMPER DURING THE DAY.

*AT THE END OF THE WEEK ALL MEDICATIONS WILL BE RETURNED WITH YOUR CAMPER.

IT IS REQUIRED THAT CAMPERS TAKING BEHAVIOR MODIFICATION MEDICATIONS FOR CONDITIONS SUCH AS ADD OR ADHD CONTINUE TAKING THEIR MEDICATIONS WHILE AT CAMP. WE ALSO ASK THAT CAMPERS HAVE BEEN ON THE CURRENT MEDICATION AND DOSAGE FOR AT LEAST ONE MONTH PRIOR TO THE START OF THEIR CAMP SESSION. WHILE SUMMER CAMP DOES PROVIDE MORE ACTIVE, HANDS-ON PROGRAMMING THAN MOST SCHOOL SITUATIONS, THE LONGER DAYS, CHALLENGING ACTIVITIES AND INTENSE SOCIAL INTERACTIONS OF SUMMER CAMP MAY OVER-STIMULATE OR STRESS A CHILD. GIVING CAMPERS THE TOOLS THEY NEED TO COPE IN THE BEST WAY POSSIBLE IS THE KEY TO A SUCCESSFUL CAMP EXPERIENCE.



OPENING DAY ARRIVAL PROCEDURES

OPENING DAY DROPOFF: (10:00 AM-12:00 PM) THUNDER BRIDGE WILL OPEN AT 10:00 AM ON MONDAY MORNING AND WILL REMAIN OPEN UNTIL 12:00 PM. IF AN EMERGENCY OCCURS AND YOUR ARRIVAL WILL BE LATER THAN 12:00 PM, PLEASE CALL THE MAIN OFFICE TO LET US KNOW WHAT TIME TO EXPECT YOU. (903-538-2711)

NEW THIS YEAR, WE WILL BE GIVING AWAY LAKEVIEW BUCKS FOR THE BEST DECORATED VEHICLES ON OPENING DAY. WE WANT TO SEE YOUR CREATIVITY COME TO LIFE ON YOUR CHURCH BUS OR FAMILY CAR!

CLOSING DAY PICKUP PROCEDURES

CLOSING DAY PICKUP: (1:00 PM-2:00 PM) AT THE CONCLUSION OF CLOSING WORSHIP, CAMPERS WILL MAKE THEIR WAY BACK TO THEIR AGE-LEVEL ASSEMBLY HALLS FOR SIGN OUT/PICK UP. ASSEMBLY HALL LOCATIONS ARE LISTED BELOW BY AGE-LEVEL.

ELEMENTARY (3RD - 5TH) @ MCCARTY

MID-HIGH (6TH - 8TH) @ BAGLEY

SENIOR HIGH (9TH - 12TH) @ ST. LUKE'S

ALL CAMPERS WILL WALK BY A LOST & FOUND AND ARTS & CRAFTS TABLE FOR ANY ITEMS THEY MAY HAVE LEFT BEHIND. COUNSELORS WILL BE AVAILABLE TO HELP LOAD YOUR CAMPER'S BELONGINGS.

ADULT VOLUNTEER COUNSELOR ARRIVAL PROCEDURES

ARRIVAL FOR ADULT VOLUNTEER COUNSELORS IS ON SUNDAY EVENING THE DAY BEFORE CAMPERS ARRIVE (3:00 PM-5:00 PM). THIS GIVES US THE OPPORTUNITY TO WALK THROUGH NECESSARY TRAININGS AND INFORMATION THAT YOU WILL NEED FOR YOUR SESSION OF SUMMER CAMP. IT ALSO GIVES YOU THE CHANCE TO MOVE INTO YOUR CABIN AND GET A LAY OF THE LAND BEFORE YOUR RESPONSIBILITIES BEGIN.

ALTHOUGH SOME OF OUR ADULT VOLUNTEER COUNSELORS ARE RESPONSIBLE FOR BRINGING KIDS TO CAMP, WE CAN NOT ALLOW CAMPERS TO ARRIVE UNTIL MONDAY MORNING. IF IT IS NOT POSSIBLE FOR OTHER ARRANGEMENTS TO BE MADE, PLEASE CONTACT THE CAMP REGISTRAR.

STAY CONNECTED TO THE NEW LAKEVIEW EXPERIENCE!

BE THE FIRST TO KNOW WHAT'S HAPPENING WITH THE BRAND NEW LAKEVIEW MOBILE APP. CHECK OUT OUR GALLERY, CAMP UPDATES, AND BE NOTIFIED WHEN NEW CONTENT IS AVAILABLE. DURING THE SUMMER, SEND MESSAGES TO YOUR CAMPER USING BUNK NOTES. YOUR NOTE WILL BE DELIVERED TO THE CAMP WITHIN 24 HOURS.

GET STARTED TODAY!

1. SEARCH FOR LAKEVIEW SUMMER CAMP IN THE IOS APP STORE OR GOOGLE PLAY.
2. ONCE YOU HAVE THE APP, CLICK THE SIGN UP BUTTON AND USE THE INVITATION CODE: LAKEVIEW23.
3. NOTE: OUR MOBILE APP IS POWERED BY BUNK1. DURING THE SUMMER, YOU WILL HAVE THE OPTION TO PURCHASE A PAID PACKAGE THAT INCLUDES PREMIUM FEATURES SUCH AS FACIAL RECOGNITION AND BUNK NOTES. IF YOU CHOOSE TO PURCHASE, CHARGES ON YOUR CARD WILL APPEAR FROM "BUNK1 SUMMER CAMPS".

CAMP UPDATES & PHOTO GALLERY WITH FACIAL RECOGNITION

- 🌲 SAVE FAVORITE PHOTOS FOR EASY ACCESS TO PICTURES OF YOUR CAMPER ALL YEAR-ROUND.
- 🌲 UPLOAD A PROFILE PHOTO OF YOUR CAMPER.
- 🌲 OUR FACIAL RECOGNITION WILL SCAN ALL THE UPLOADED PHOTOS AND NOTIFY YOU WHEN WE DETECT PHOTOS OF YOUR CAMPER.
- 🌲 SHARE PHOTOS TO SOCIAL MEDIA OR EMAIL A PHOTO TO FAMILY.
- 🌲 CUSTOMIZE UNIQUE PHOTO GIFTS SUCH AS PHOTO BOOKS, MUGS, CALENDARS, PHONE CASES AND MORE.
- 🌲 ORDER HIGH RESOLUTION DIGITAL DOWNLOADS OR PRINTS.
- 🌲 SEND BUNK NOTES & RECEIVE BUNK REPLIES.
- 🌲 SEND BUNK NOTES DAY OR NIGHT. YOUR CAMPER RECEIVES A PDF AT 10:00AM CST EACH DAY CONTAINING ALL BUNK NOTES RECEIVED IN THE LAST 24 HOURS.
- 🌲 BUNK REPLIES: RECEIVE A HANDWRITTEN NOTE FROM YOUR CAMPER IN YOUR BUNK1 ACCOUNT ON OUR UNIQUE STATIONERY.
- 🌲 UNLIMITED STATIONERY CAN BE PURCHASED IN A BUNDLE OR UNDER THE BUNK REPLIES TAB.
- 🌲 PRINT THE STATIONERY (BUNK REPLIES TAB) AND SEND YOUR PREFERRED AMOUNT WITH YOUR CAMPER TO CAMP OR ATTACH AN INDIVIDUAL PIECE TO BE DELIVERED WITH YOUR BUNK NOTE (0 CREDITS IF UNLIMITED).
- 🌲 MAKE SURE YOUR CAMPER KNOWS TO WRITE ON THE BARCODED STATIONERY AND HAND IT IN TO THEIR COUNSELOR.
- 🌲 CAMP STAFF WILL COLLECT BUNK REPLIES AND SEND THEM TO BUNK1. BUNK1 WILL THEN SCAN THE BARCODE & SEND THE REPLY TO YOUR ACCOUNT UNDER THE BUNK REPLIES TAB.
- 🌲 PLEASE NOTE THAT THIS APP IS POWERED BY BUNK1. FOR TECHNICAL SUPPORT, THE BUNK1 TEAM IS AVAILABLE 7 DAYS A WEEK DURING PEAK SEASON. THEY GUARANTEE A RESPONSE WITHIN 24 HOURS AND IT'S USUALLY MUCH QUICKER THAN THAT. PLEASE CALL BUNK1 AT (212-974-9112) OR EMAIL (SUPPORT@BUNK1.COM)

REGISTRATION DETAILS

THREE CAMP FORMS ARE REQUIRED BEFORE YOUR CAMPER ARRIVES FOR THEIR CAMP SESSION.

HEALTH HISTORY FORM- CAMPERS WILL NOT BE ADMITTED TO CAMP WITHOUT AN ACCURATELY COMPLETED AND SIGNED HEALTH FORM BY A PARENT/GUARDIAN.

CABIN LIFE FORM- OUR COUNSELORS REALLY APPRECIATE THIS INFORMATION. IT HELPS THEM GET TO KNOW YOUR CAMPER EVEN BEFORE THEY ARRIVE. IT GIVES YOU THE OPPORTUNITY TO "TALK" DIRECTLY TO YOUR CAMPER'S COUNSELOR!

CAMPER CODE OF CONDUCT - THIS IS THE STANDARD THAT ALL CAMPERS WILL BE HELD ACCOUNTABLE TO. MAKE SURE THAT YOU AND YOUR CAMPER READ THIS TOGETHER. IT ALLOWS US TO AVOID POTENTIAL CONFLICTS WHEN THE CAMP, PARENTS/GUARDIANS AND CAMPERS ARE ALL ON THE SAME PAGE!

FINAL PAYMENTS ARE DUE TWO WEEKS BEFORE THE START OF YOUR CAMPER'S SESSION.

IF YOU STILL HAVE A BALANCE, THERE ARE A FEW OPTIONS FOR PAYING YOUR CAMP FEES:

- 🌲 BY LOGGING BACK INTO YOUR ACCOUNT, ADDITIONAL PAYMENTS CAN BE MADE AS OFTEN AS YOU WOULD LIKE.
- 🌲 BY MAILING A CHECK OR MONEY ORDER TO LAKEVIEW. PLEASE ASSURE THAT YOU HAVE YOUR CAMPER'S NAME IN THE "FOR" LINE OF THE CHECK.
- 🌲 BY CALLING PEGGY JORDAN (CAMP REGISTRAR) AT THE CAMP OFFICE DURING BUSINESS HOURS AND GIVING YOUR DEBIT/CREDIT CARD INFORMATION OVER THE PHONE.



FREQUENTLY ASKED QUESTIONS

HERE ARE SOME OF THE MOST COMMONLY ASKED QUESTIONS. IF YOU HAVE ANY OTHERS PLEASE DO NOT HESITATE TO CALL OUR MAIN OFFICE AT (903)-538-2711.

SAFETY: WILL MY CHILD BE SAFE WHILE AT CAMP?

WHILE THERE IS ALWAYS A FUNDAMENTAL RISK TO BEING AT CAMP, LAKEVIEW'S NUMBER ONE PRIORITY IS THE SAFETY OF OUR CAMPERS, GUESTS, AND STAFF. WE MAKE EVERY EFFORT TO MAKE SURE OUR SAFETY STANDARDS AND PRACTICES ARE THE BEST THAT THEY CAN BE. THE HEALTH AND WELFARE OF OUR CAMP COMMUNITY WILL ALWAYS BE OUR TOP CONCERN.

CHURCH PAYMENTS: WHAT IF MY CHURCH IS GOING TO PAY A PORTION OF MY CAMPER'S FEES?

IF YOUR CHURCH OR DISTRICT HAS DECIDED TO SUBSIDIZE THE COST OF CAMP, THEY WILL BE ABLE TO MAKE A PAYMENT ON YOUR BEHALF. YOUR CHURCH LEADER SHOULD PROVIDE YOU WITH FURTHER DETAILS AS NEEDED. ONCE A PAYMENT IS RECEIVED, IT WILL BE POSTED TO YOUR ACCOUNT.

LAKEVIEW SCHOLARSHIPS: DOES LAKEVIEW OFFER FINANCIAL ASSISTANCE FOR CAMPERS?

WE BELIEVE THAT FINANCIAL HARDSHIPS SHOULD NOT BE A REASON WHY CAMPERS CAN'T PARTICIPATE AT CAMP. THAT'S WHY LAKEVIEW OFFERS CAMP SCHOLARSHIPS FOR THOSE WHO FINANCIALLY QUALIFY. BECAUSE RESOURCES ARE LIMITED LAKEVIEW IS UNABLE TO FUND 100% OF ANY CAMP FEE. RECIPIENTS ARE EXPECTED TO PARTICIPATE FINANCIALLY IN SOME WAY. THE SCHOLARSHIP IS DETERMINED BASED ON THE NUMBER OF HOUSEHOLD MEMBERS AND TOTAL HOUSEHOLD INCOME. THIS ASSISTANCE IS GIVEN INDEPENDENT OF ANY ASSISTANCE THAT THE LOCAL CHURCH MAY OFFER. THE APPLICATION IS ACCESSIBLE DURING THE ONLINE REGISTRATION PROCESS.

MEDICATION: HOW WILL MEDICATION (PRESCRIPTION, OTC, VITAMINS, SUPPLEMENTS) BE DISPENSED DURING THE CAMP SESSION?

ALL MEDICATIONS WILL BE DISPENSED BY OUR ONSITE MEDICAL STAFF DURING THE SESSION. MEDICATIONS ARE TYPICALLY DISPENSED DURING BREAKFAST, LUNCH, DINNER AND BEDTIME. IN AN EFFORT TO MAKE THE MEDICATION DISTRIBUTION PROCESS MORE MANAGEABLE, WE ARE ASKING PARENTS TO ONLY SEND PRESCRIPTION OR ESSENTIAL OVER-THE-COUNTER MEDICATIONS. CAMPERS AND STAFF ARE NOT ALLOWED TO KEEP ANY MEDICATIONS IN THEIR CABINS. PLEASE BE SURE TO CHECK IN ALL MEDICATIONS TO OUR INFIRMARY DURING CHECK-IN ON MONDAY.

FREQUENTLY ASKED QUESTIONS

BEDWETTING: MY CHILD STILL WETS THE BED OCCASIONALLY, DOES THIS MEAN HE/SHE IS NOT READY FOR CAMP?

BED WETTING IS A COMMON REALITY FOR MANY CHILDREN AT CAMP AND SEVERAL CAMPERS WEAR PULL-UPS. SOME CAMPERS, DEPENDING ON THE AGE, ARE VERY SELF-CONSCIOUS ABOUT THIS AND DON'T WANT ANYONE TO KNOW THAT THEY ARE WEARING A PULL-UP. THIS IS NOT A PROBLEM. OUR BATHROOMS ARE SET UP IN SUCH A WAY THAT CAMPERS CAN PUT ON AND TAKE OFF THE PULL-UP PRIVATELY. WHEN DROPPING YOUR CAMPER OFF, JUST LET THE COUNSELOR KNOW AND THEY CAN HELP KEEP IT DISCREET. IF YOUR CHILD DOES HAVE AN ACCIDENT AT CAMP, OUR COUNSELORS QUIETLY GO BACK TO THE CABIN AFTER EVERYONE HAS LEFT AND TAKE THE BEDDING TO BE WASHED. BEDDING IS BROUGHT BACK TO THE CABIN BEFORE ANYONE COMES BACK.

STAFF: WHAT IS THE SELECTION PROCESS FOR LAKEVIEW SUMMER STAFF?

WE TAKE A GREAT DEAL OF PRIDE IN THE SELECTION OF OUR STAFF. PROSPECTIVE COUNSELORS GO THROUGH A COMPREHENSIVE APPLICATION PROCESS WHICH INCLUDES A BACKGROUND CHECK, AN INTENSIVE APPLICATION, REFERENCES AND A PERSONAL INTERVIEW WITH ONE OF THE CAMP STAFF. AN EXTENSIVE TRAINING PROGRAM IS PROVIDED AT THE START OF THE SUMMER SEASON. STAFF MEMBERS ARE TRAINED ON TOPICS SUCH AS CHILD DEVELOPMENT, HOW TO RECOGNIZE, PREVENT, AND TAKE ACTION AGAINST BULLYING, BEHAVIOR MANAGEMENT, RISK MANAGEMENT, EMERGENCY PROCEDURES, BIBLE STUDY/SMALL GROUP, AND MUCH MORE. DURING THE SUMMER, STAFF ARE SUPERVISED AND EVALUATED BY MEMBERS OF OUR CAMP LEADERSHIP TEAM AND FULL-TIME STAFF.

OUR ADULT VOLUNTEER COUNSELORS IN EACH CABIN ARE TRAINED ON TOPICS SUCH AS CHILD DEVELOPMENT, HOW TO RECOGNIZE, PREVENT, AND TAKE ACTION AGAINST BULLYING, BEHAVIOR MANAGEMENT, EMERGENCY PROCEDURES, AND MUCH MORE. IN ADDITION TO TRAINING, EACH VOLUNTEER MUST BE RECOMMENDED BY THE CHURCH THEY COME WITH AND COMPLETE THE SAFE SANCTUARY CHILD ABUSE AWARENESS AND PREVENTION CERTIFICATION.

COUNSELOR RATIO: WHAT IS LAKEVIEW'S CAMPER TO COUNSELOR RATIO?

WE STRIVE TO PROVIDE THE BEST POSSIBLE EXPERIENCE FOR YOUR CHILD. AT A MINIMUM, LAKEVIEW HAS A 7:1 CAMPER TO COUNSELOR RATIO. THIS ALLOWS US TO CREATE A MEANINGFUL EXPERIENCE AND MAXIMIZE THE TIME CAMPERS GET TO SPEND WITH THEIR ROLE MODELS IN SMALL GROUPS.

CONTACT WITH YOUR CAMPER: CAN I CALL OR VISIT MY CAMPER?

ONE OF THE MOST SIGNIFICANT ELEMENTS OF THE CAMP EXPERIENCE IS LEARNING INDEPENDENCE. IT'S HARD TO BE APART; HOWEVER, KIDS ADJUST TO CAMP LIFE MUCH MORE EASILY THAN WE OFTEN ASSUME. TYPICALLY, WE FIND THAT THERE ARE MANY MORE KIDSICK PARENTS THAN HOMESICK CAMPERS! IF A CAMPER DOES BECOME HOMESICK, HEARING A PARENT'S VOICE CAN INTENSIFY SAD FEELINGS. THEREFORE, WE DO NOT HAVE CAMPERS TALK TO PARENTS ON THE PHONE OR ALLOW VISITATION FROM PARENTS.

FREQUENTLY ASKED QUESTIONS

HOMESICKNESS: HOW DOES LAKEVIEW DEAL WITH HOMESICKNESS?

HOMESICKNESS IS A REALITY OF OVERNIGHT CAMPING, BUT ONE OF THE UNIQUE EXPERIENCES OF CAMPING IS ALLOWING CAMPERS TO GAIN A SENSE OF INDEPENDENCE. ALL OF OUR COUNSELORS GO THROUGH AN EXTENSIVE STAFF TRAINING BEFORE THE SUMMER BEGINS THAT INCLUDES HELPING WITH A HOMESICK CAMPER. IF A CAMPER IS HOMESICK, OUR COUNSELORS WILL DO THEIR BEST TO COMFORT THE CAMPER. IF THE HOMESICKNESS PERSISTS, OUR STAFF WILL TALK WITH THE CAMPER AND WILL CONNECT WITH PARENTS TO FIND THE BEST STRATEGIES FOR HELPING THE CAMPER THROUGH THE SESSION. ALTHOUGH WE HAVE CAMPERS EACH SESSION WHO WILL WRESTLE WITH SOME HOMESICKNESS, IT IS EXTREMELY RARE THAT A CAMPER WILL NEED TO BE SENT HOME. CAMPERS WHO STICK IT OUT WILL GAIN AN INCREDIBLE SENSE OF INDEPENDENCE!

ELECTRONICS: DOES LAKEVIEW ALLOW PHONES, VIDEO GAMES, OR OTHER ELECTRONIC DEVICES?

KIDS SPEND ON AVERAGE 52 HOURS A WEEK IN FRONT OF AN ELECTRONIC SCREEN. WE BELIEVE IN TEACHING KIDS HOW TO BE EXTRAORDINARY WITHOUT BEING TIED TO ELECTRONIC SCREENS, SO WE DO NOT ALLOW PHONES, VIDEO GAMES OR CAMERAS. THIS POLICY GIVES CHILDREN THE GIFT OF A TECHNOLOGY FREE ENVIRONMENT — A PLACE WHERE CAMPERS, COUNSELORS, AND STAFF ARE FULLY PRESENT WITH EACH OTHER, TRANSPORTING THEM TO A PLACE WHERE WE CAN FORGE RELATIONSHIPS THAT LAST A LIFETIME.

BUNK REQUESTS: DOES LAKEVIEW ALLOW BUNK REQUESTS?

ABSOLUTELY! CAMPERS MAY SUBMIT UP TO TWO NAMES FOR THEIR BUNK REQUEST. THE CAMPERS REQUESTING EACH OTHER MUST BE NO MORE THAN ONE GRADE/YEAR APART AND BE IN THE SAME AGE LEVEL GROUP AT CAMP. WHILE WE DO OUR BEST TO HONOR BUNK REQUESTS, WE CANNOT GUARANTEE THAT YOUR REQUEST WILL BE GRANTED.

INCLEMENT WEATHER: WHAT HAPPENS WHEN THERE IS INCLEMENT WEATHER WHILE MY CHILD IS AT CAMP?

IF THE RAIN IS LIGHT AND STEADY, AND THERE IS NO RISK OF LIGHTNING, CAMPERS WILL STILL BE ABLE TO WALK TO THE ACTIVITIES AND PROGRAMS PLANNED FOR THE DAY. OUR FULL-TIME STAFF MONITOR THE WEATHER AT ALL TIMES AND CHECK TO MAKE SURE LIGHTNING AND HEAVY RAIN IS OUTSIDE OF THE SET RANGE AROUND CAMP. IF LIGHTNING DOES HAPPEN TO COME WITHIN THE DESIGNATED RANGE, THEN WE WILL MAKE SURE ALL THE CAMPERS AND STAFF ARE SAFE INSIDE A BUILDING. WE WILL THEN PROCEED WITH PRE-PLANNED ACTIVITIES THAT ARE IN PLACE IN THE OCCASION OF NEEDING TO BE INDOORS.

BULLYING: WHAT IS LAKEVIEW'S BULLYING POLICY?

WE ENCOURAGE ALL CAMPERS TO TREAT EACH OTHER WITH RESPECT, REFRAINING FROM BULLYING OF ANY KIND. NEGATIVE INTERACTIONS, AS THEY ARE BROUGHT TO OUR ATTENTION, WILL BE ADDRESSED BY LAKEVIEW STAFF TO ENSURE ALL CAMPERS HAVE A POSITIVE AND UPLIFTING EXPERIENCE.